

# SRAVTE

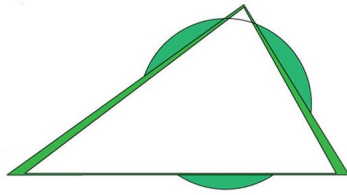
Depue

Hall

La Moille

Lasalle-Peru

Mendota



Ottawa

Princeton

Putnam  
County

Seneca

Streator

Area Career Center

## CAREER EXPO

Mathematically Focused

### LESSON DESCRIPTION

In this lesson you will explore different jobs that are of interest to you. You will use the Bureau of Labor Statistics (BLS) to gather your information and answer the questions. With each of the 16 occupation areas there will be sample math problems, with explanations for you to solve.

### SRAVTE Office

Jeanette Maurice & Dwayne Mentgen

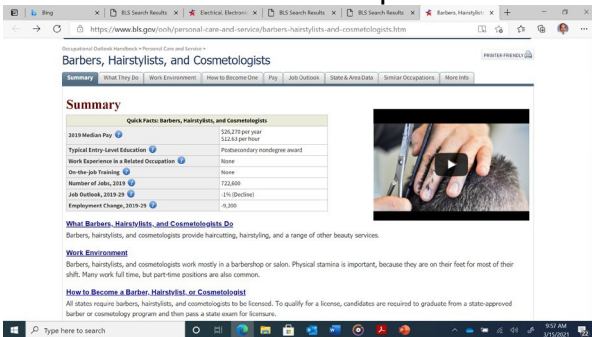


	5.
--	----

<p>5. If one of those five jobs is a job you wrote in, then click on the link that is to the right of that job listing (CLICK HERE). If the job you wrote in <b>is not listed</b> go to <a href="http://www.bls.gov">www.bls.gov</a> . Once at that link, in the upper right hand corner will be a search box. In that box type in the name of the career/job you were interested in. A list will appear with results for that job. Click on the top link in the list. Then from that page answer the questions to the right.</p>	<ol style="list-style-type: none"> <li>1. What is the 2019 median pay for that job?</li> <li>2. What is the job outlook (will it increase faster, the same, or slower than other jobs will grow) ?</li> <li>3. What level of education is needed to perform the job/career you selected?</li> </ol>
<p>6. The answers you found in question five were related to the job you selected by its use across the whole nation. The question now is how does this job and its outlook appear in the state of Illinois? Scroll down the page for your occupation until you see a map of the United States, then move your mouse pointer over the state of Illinois. A box will appear with the data in it.</p> <p>Keep scrolling down the page to complete the answers for this page.</p>	<ol style="list-style-type: none"> <li>1. What is the median pay for your profession in Illinois?</li> <li>2. Is the pay in Illinois higher or lower than the national pay, why do you think it is higher or lower? Is Illinois listed in one of the top paying states for this occupation?</li> <li>3. How does Illinois compare to the country as whole, in terms of pay?</li> </ol>

7. Pay is not the only thing to consider when choosing an occupation, the greatest consideration is whether that job is something you would like to do. Now that you have some information about the job you chose, and its pay, go to the top of the BLS page and use the search box in the upper right hand corner. Type in the name of your job and from the list that appears click the link that best describes the job you typed in.

8. When the job appears, use this page to answer the questions to the right, The page you end up on should look like the picture below:



1. Write a brief description (in your own words) of what people in this occupation do.

2. What level of schooling do people in this occupation have to complete to be able to do the job?

3. Where do people who do the job you selected generally work (their environment)?

4. Do it look like this occupation will grow or decline in the future?

9. Lastly, now go to the PowerPoint presentation and go to the

1. Answers to math problems from Program of Study Selected.

Program of Study area your job is in. Once there read the examples of how math is used in that program of study. Once you have read up on the math and looked at the examples, attempt to answer the sample math problems that were presented to you. Write your answers in the box to the right. Your teacher will have the correct answers to the problems you attempted.